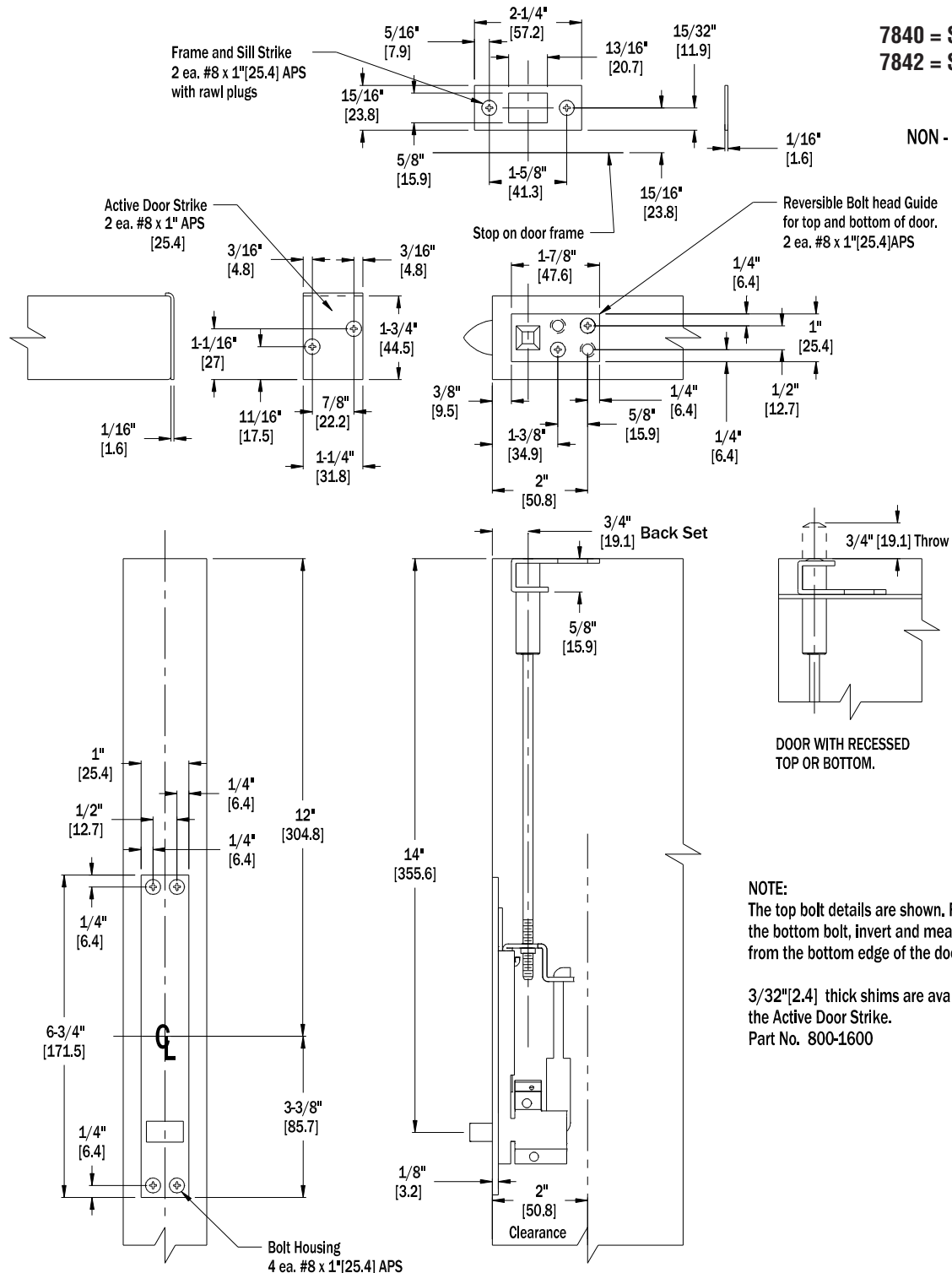


7840 SERIES AUTOMATIC FLUSH BOLTS TEMPLATE

THIS TEMPLATE APPLIES TO: ITEM NOS. 7840 & 7842

7840 = SINGLE BOLT
7842 = SET OF BOLTS

NON - HANDED



NOTE:
The top bolt details are shown. For the bottom bolt, invert and measure from the bottom edge of the door.

3/32" [2.4] thick shims are available for the Active Door Strike.
Part No. 800-1600

NOTE: Due to occasional product changes, please ensure your template is current by checking our website at www.burnsmfg.com or call us at 814-833-7428. Burns Mfg. is not responsible for obsolete template errors.

Date: 4/10 - Rev. 1