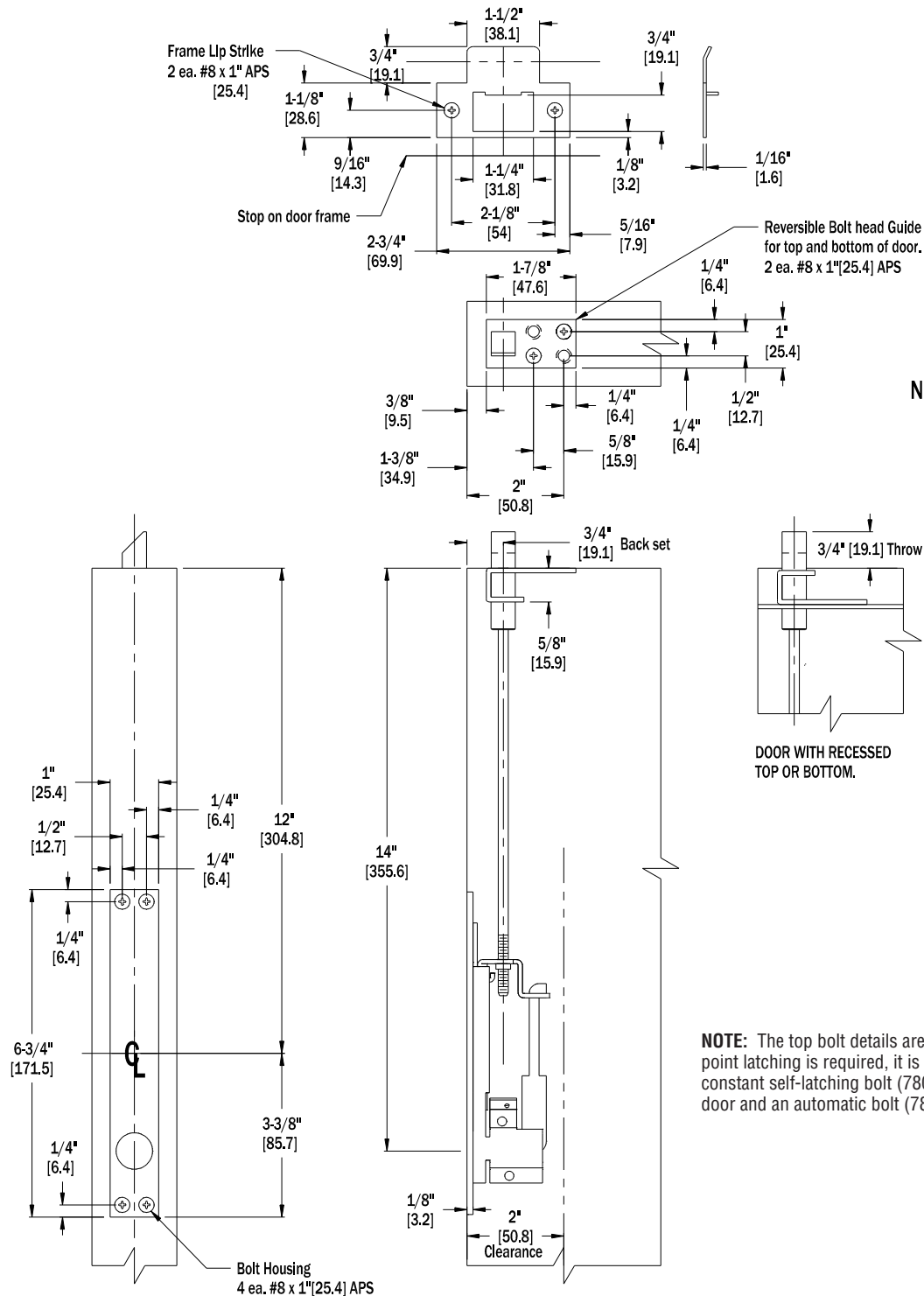


# 7845 COMBINATION FLUSH BOLT TEMPLATE

7845 = 7805 TOP BOLT & 7840 BOTTOM BOLT

7805 SHOWN

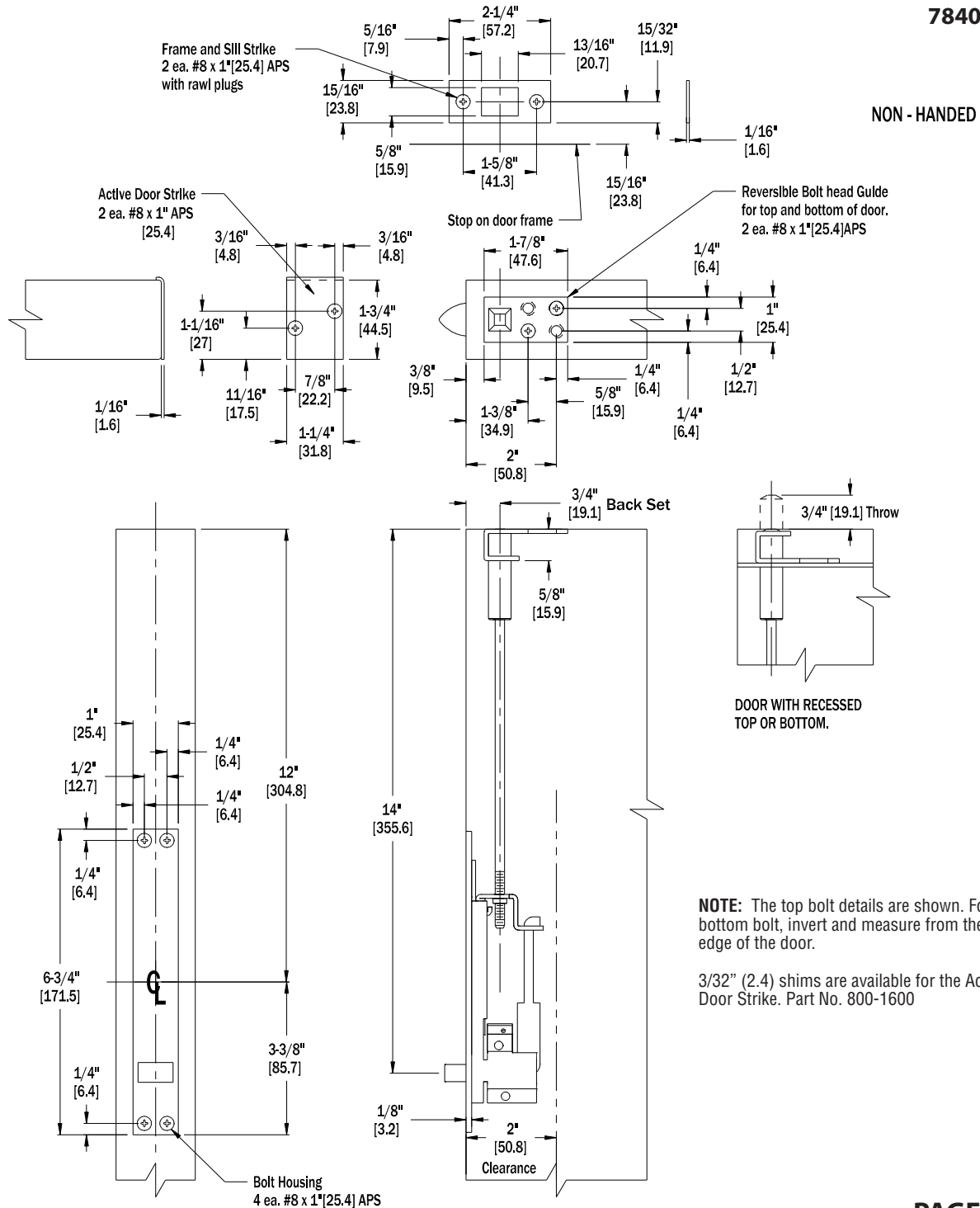


**NOTE:** The top bolt details are on this template. When two point latching is required, it is recommended that one constant self-latching bolt (7805) be used at the top of the door and an automatic bolt (7840) at the bottom of the door.

# 7845 COMBINATION FLUSH BOLT TEMPLATE

7845 = 7805 TOP BOLT & 7840 BOTTOM BOLT

7840 SHOWN



PAGE 2 OF 2

**NOTE:** Due to occasional product changes, please ensure your template is current by checking our website at [www.burnsmfg.com](http://www.burnsmfg.com) or call us at 814-833-7428. Burns Mfg. is not responsible for obsolete template errors.

Date: 4/10 - Rev. 1